

# How to Update Flip F/W

\* This document is the firmware update guide for FLIP

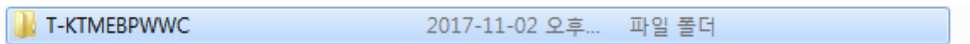
1. Download the Firmware file and extract to a USB storage

- T-KTMEBPWWC.zip.

2. **Caution!**

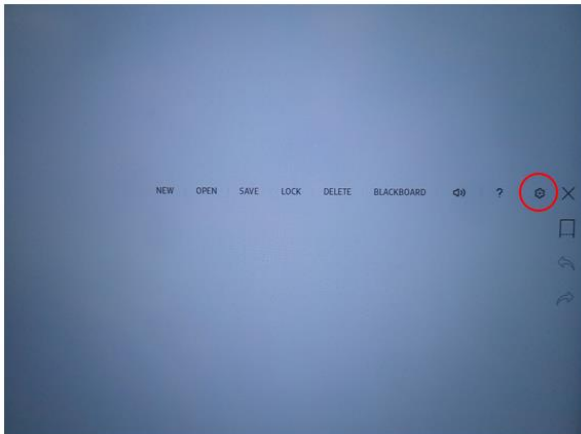
Check the folder name 'T-KTMEBPWWC' with its sub-directory named 'image' containing 'upgrade.msd' file

- Folder directory must be in order [USB / T-KTMEBPWWC / image / ]

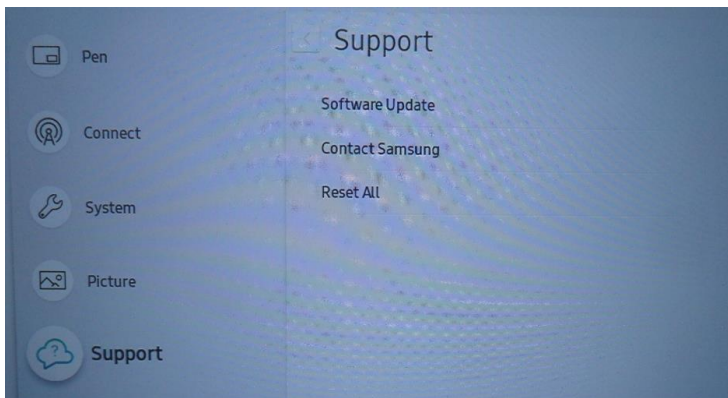


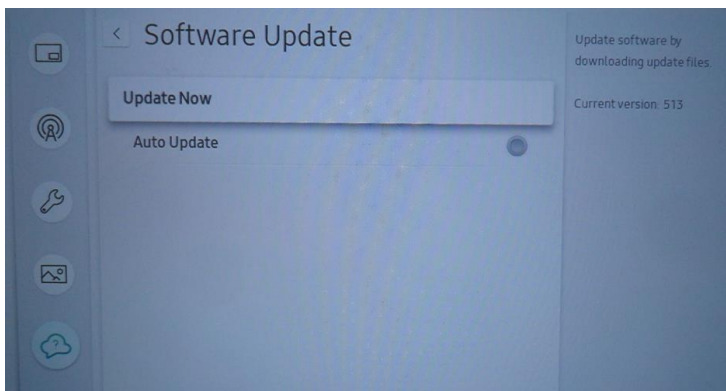
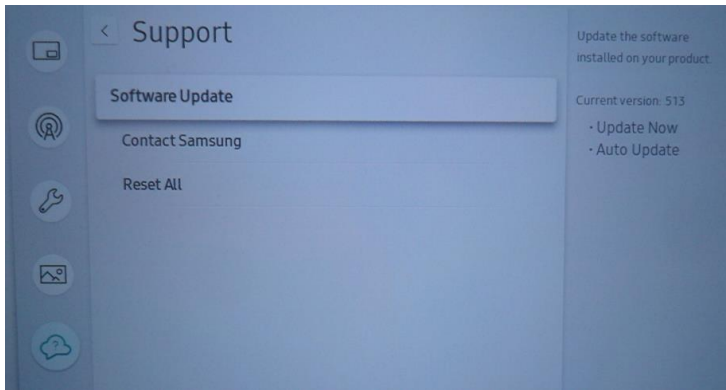
3. Connect USB to FLIP

4. Press Settings Button



5. Select the menus in order [Support → Software Update → Update Now]

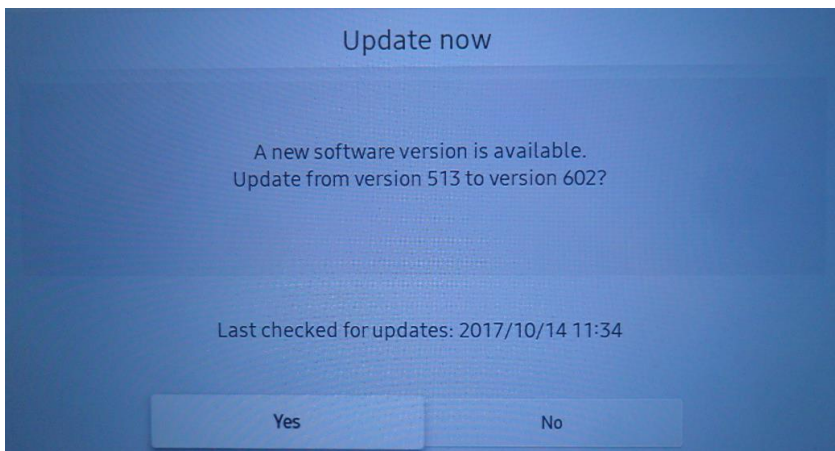




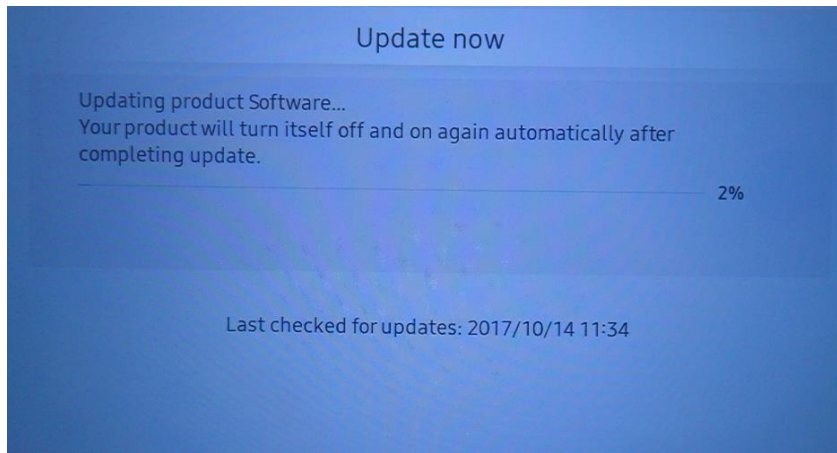
6. Allow to browse the update files in USB



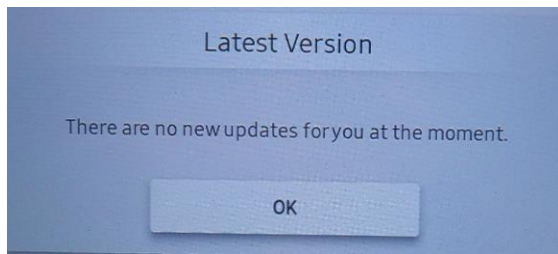
7. Click Yes



8. Update is in progress. After the update is completed, FLIP will be restarted.



If you see the following message, it means you already have the latest firmware on FLIP.



9. Once the update is completed and FLIP is rebooted,

End of Document